

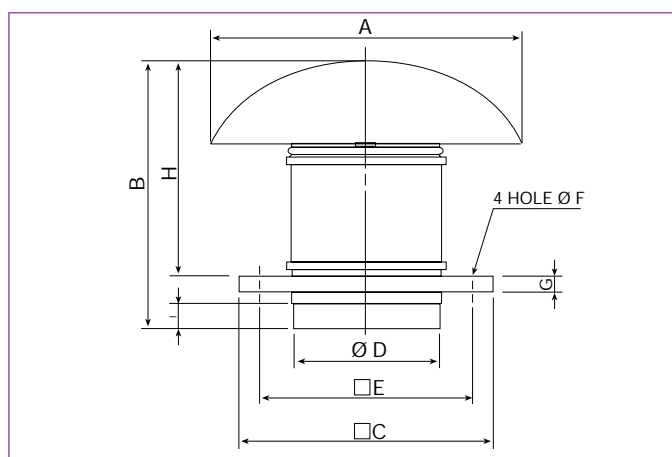
Technical characteristics

Before installation check that the product electrical characteristics listed on the data plate label (Voltage, power, frequency etc) match those of the intended electrical supply.

Model		Speed (r.p.m.)		Max. power abs. (W)		Max. current abs. (A)		Max. air volume (m ³ /h)		Max. temp. (°C)	SPL* (dB(A))	Weight (Kg)
		High speed	Low speed	High speed	Low speed	High speed	Low speed	High speed	Low speed			
TH-500/150	EXTRACT	2450	1800	68	40	0,26	0,19	470	355	60	49,5	3,8
	SUPPLY	2450	1800	67	40	0,25	0,19	505	380	60	45	3,8
TH-500/160	EXTRACT	2450	1800	68	40	0,26	0,19	470	355	60	49,5	3,8
	SUPPLY	2450	1800	67	40	0,25	0,19	505	380	60	45	3,8
TH-800N	EXTRACT	2500	2100	90	75	0,4	0,31	790	630	60	50	5,6
	SUPPLY	2500	2050	90	75	0,4	0,31	880	695	60	48	5,6
TH-800	EXTRACT	2500	2100	140	118	0,58	0,52	775	620	60	53	5,6
	SUPPLY	2500	2000	140	118	0,58	0,52	860	695	60	52	5,6
TH-1300	EXTRACT	2400	1800	170	120	0,83	0,52	1100	780	60	59,5	11,2
	SUPPLY	2400	1800	172	110	0,76	0,49	1150	845	60	58,5	11,2
TH-2000	EXTRACT	2480	1750	255	160	1,27	0,79	1725	1200	60	67	17,2
	SUPPLY	2480	1800	300	190	1,27	0,79	1650	1245	60	63,5	17,2

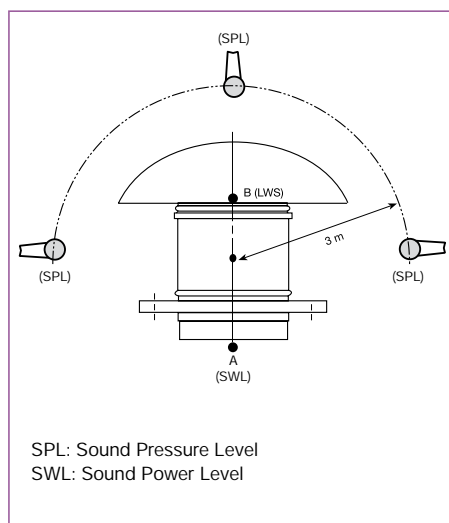
* Sound Pressure Level

Dimensions (mm)



Model	A	B	C	D	E	F	G	H	I
TH-500/150	400	349	300	150	245	10	20	274	33
TH-500/160	400	339	300	160	245	10	20	274	33
TH-800 N	400	371	300	198	245	10	20	306	36
TH-800	400	371	300	198	245	10	20	306	36
TH-1300	546	457	435	248	330	12	20	372	42
TH-2000	735	544	560	312	450	12	20	450	50

Acoustic characteristics



The values of the sound levels given in the technical characteristic chart are sound pressure levels measured in dB(A) at a distance of 3 m with the maximum airflow.

To obtain the sound power level at A or B, for extract operation, add to the sound pressure level (SPL Extract) given in the Technical Characteristic chart, the correction value shown in the following table.

Model		Sound power level for extract operation						
		Frequency bands Hz						
		125	250	500	1000	2000	4000	8000
TH-500	A	-7,5	-3	9	6	11	4	-2
	B	-7,5	6	13,5	17,5	14,5	4,5	-3
TH-800N	A	-7,5	3,5	8	9,5	14	9	0
	B	-4	7,5	15	16	14,5	9	1,5
TH-800	A	-7,5	3,5	8	9,5	14	9	0
	B	-4	7,5	15	16	14,5	9	1,5
TH-1300	A	-13,5	0	1	12	9	4	0
	B	-11	5,5	11,5	17,5	15	7	-0,5
TH-2000	A	-21,5	-7	-3	7	5,5	-2	-8,5
	B	-16,5	2,5	7	20	7,5	1	-8